

**MAYIM**  
MODULAR FLOOD BARRIER

### Are there any tools or resources needed when deploying the Mayim™ Barrier?

The Mayim barrier is designed to be installed by unskilled personnel and no tools are required for assembly or dismantling. Sections are stacked neatly for use and can be hand carried to the site or transported in a stack or on a pallet. Installation uses Mayim's unique tip, click, and lock system, which requires no additional resource.

### What is the Mayim™ Flood Barrier made out of?

The Mayim Barrier is manufactured using high quality ABS Material that is injection molded. Panels are molded with structural support ribs, which serve as buttresses to strengthen the barrier, so that it can handle the tremendous pressures and weight of water.

### Can I leave the Mayim™ Barrier out in the sun for long periods of time?

While we recommend setting up the barrier when needed and breaking down after use, the barriers are UV protected to protect against material degradation and color fading.

### Can I use the Mayim™ Barriers in the winter?

The Mayim Barrier's material has an operating temperature range of -10 to 115F, so it can be used in extreme cold and heat.

### How is a seal created with the ground?

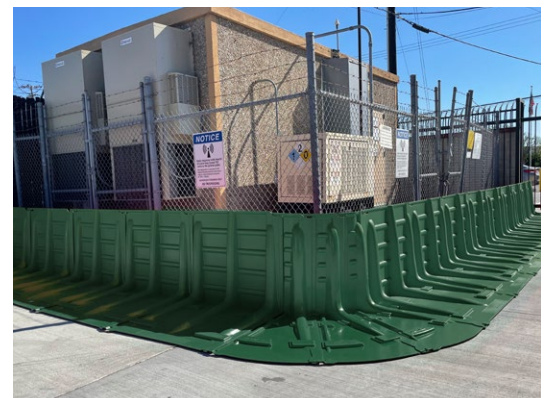
All Mayim barriers have a neoprene seal on the underside and along the sides of each panel, which creates a seal with the ground below and the adjacent panel. When water levels rise, the weight enhances the seal by increasing the downward and outward pressure.

### How can I make turns or right angles with Mayim™?

Each Mayim barrier can be adjusted 3 degrees in either direction. For larger turns, such as 90 degree turns around a building, use our MB1/2 Outward and Inward turn sections. Each provides 33+ degrees of turn and 3 placed side-by-side create a 90 degree turn.

### What level of water can these panels protect against?

There are 2 flood wall systems to choose from. The MB1, 20" panel, will protect against 19" of water, and the MB2, 30" panel, will protect against 29" of water.





### How can I transport the panels?

We recommend staging the barriers on a dolly for ease of transport, but they are lightweight enough to carry a few pieces at a time, by hand. For larger projects, you can store and transport panels on standard shipping pallets.

### How long does it take to install a Mayim™ Flood Control Wall?

Mayim Barriers are designed to be deployed quickly by unskilled personnel. Each barrier weighs between 6 and 21 lbs, allowing nearly anyone to move sections into position. The locking mechanism is easy and intuitive, allowing for deployment of approximately 3 sections per minute, or roughly 15 minutes for 100ft of protection.

### I need to protect around a building, how would this system go around structures?

The Mayim barrier has built in flexibility, allowing it to turn slightly, even when using only Straight (MB1/MB2) sections. There is a 3 degree flexibility in the design, in either direction, meaning you can use the connection system to slightly turn sections. You can also utilize inward and outward curved sections (MB1-IC/OC and MB2-IC/OC) to create more dramatic turns or to make corners (use 3 units to make a 90 degree turn in either direction).

### My building's exterior is brick and uneven, will the barrier keep water out?

We recommend using our End Gables to abut a Mayim flood barrier to a fixed wall. This helps seal off a run of the barrier and create a tight seal. The thick foam on Gable Ends works to create a seal against uneven surfaces such as brick, cinder block, or stucco. An alternative to Gable Ends is to use poly-sheeting and duct tape to seal the small gap between a Mayim barrier and a wall. See instructions for more information on creating a proper seal.

### What colors do the Mayim Flood Barriers come in?

MB1 and MB2 are available in Red. MB2 is also available in Hunter Green.

### Can this be used as a containment pool?

The Mayim barrier is ideal for creating a containment pool, using a variety of our straight barriers and curved sections to create a pool sized for your needs. If a pool is needed to contain chemicals, we suggest adding a poly-sheet liner to prevent any unwanted leakage.

### How do I clean the Mayim™ Barriers after use?

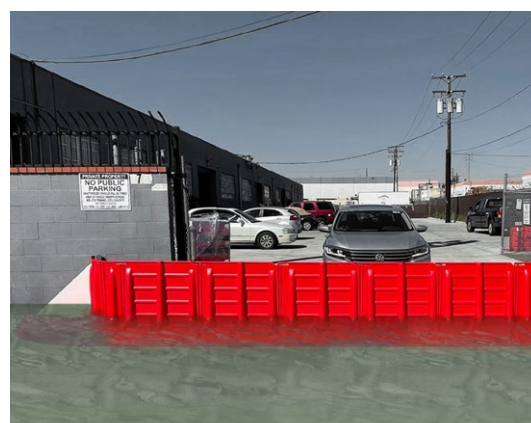
You can hose down the panels after use, making sure to clear away any stuck on debris or stains. Standard household cleaners can be used to clean stubborn dirt. Stack sections after they are completely dry.

### Where does the product ship from?

All products currently ship from our regional warehouse in Santa Fe Springs, California.

### How do I get started?

Contact us and speak with a flood specialist today to determine the number and type of panels that are right for you, or check out our Shop and view pre designed kits to fit a variety of needs.



**GARRISON**  
FLOOD CONTROL

Contact us: (929) 299-2099 | [sales@garrisonflood.com](mailto:sales@garrisonflood.com) | [www.garrisonflood.com](http://www.garrisonflood.com)