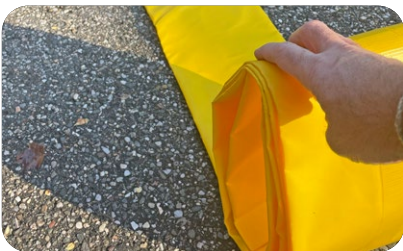




Guppy™ is available in 6", 12" and 24" diameters as well as 10ft, 25ft, 50ft and 100ft lengths. Each water filled flood control tube becomes heavy with water when filled, creating a durable berm that protects against rising floodwaters.



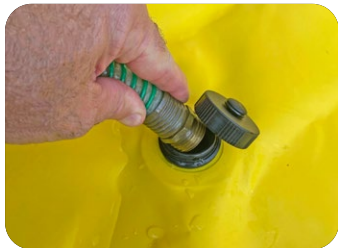
## Set Up

- Easily transport the unfilled and folded Guppy™ to the protection area.
- Roll out the Guppy™ Flood Tubes completely before filling.



## Fill

- Locate the black fill cap on the end of the Guppy™.
- Insert a standard garden hose and fill until Guppy™ becomes round and achieves full diameter.
- Depending on the size of the tube and flow of the water source, the Guppy™ could take anywhere from 3-10 minutes to fill with a standard garden hose.



## Drain

- Locate the translucent drainage cap on the other end of the Guppy™ away from the fill hole.
- Remove the drainage cap and allow Guppy™ to completely drain.
- You can also depress the back-flow tab on the fill hole to drain water from the other side.
- Roll Guppy™ tube to be sure all water is removed from the tube before storage.



## Helpful Tips

- When positioning the Guppy™ tube against a fixed wall, allow for extra tube length to bend against the wall while filling to provide a greater seal against water infiltration.
- The fill hole has back-flow protection to stop water from leaking when removing the hose.
- Be sure not to overfill Guppy™ to allow flexibility for the environment.
- If below freezing temperatures are expected, you can add a small amount of automotive antifreeze to the fill.
- The Guppy™ was designed to be filled with a standard garden hose, however the hose is not screwed into the opening. Simply lay the end of the hose into the fill valve to fill Guppy.
- If laying on a sloped surface, the use of a shim is applicable to prevent rolling.



**For Additional Help or Support - Contact [salesgarrisonflood.com](http://salesgarrisonflood.com)**

(929) 299-2099 | [www.garrisonflood.com](http://www.garrisonflood.com)

